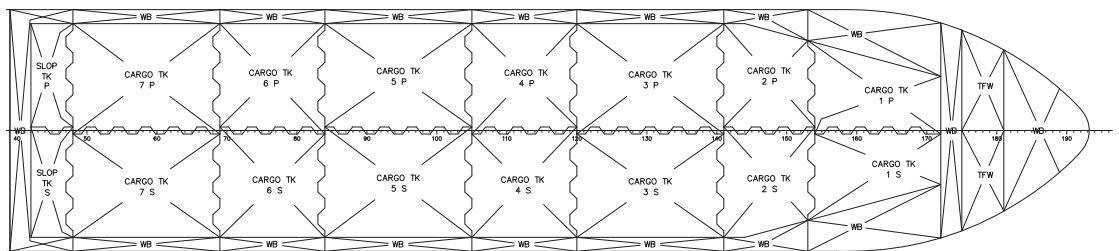


19,999 DWT IMO II & III Chemical Tanker

General:	This Chemical tanker is designed as a single propeller vessel with two-stroke diesel engine, bulbous bow, forecastle, continuous freeboard deck and transom stern. The vessel is to carry crude oil, oil products, IMO 2 and IMO 3 products.	
Main Particulars:	Lenght o.a. approx.	151.00 m
	Lenght p.p.	142.00 m
	Breadth moulded	25.90 m
	Depth to main deck	13.00 m
	Draught (design)	8.00 m
	Deadweight	19,999 tonnes
Capacity:	Cargo tanks (98 % full)	min. 23,000 m ³



DECK 3

Speed:	Service (90 % MCR with 15 % Sea Margin)	13.00 kn at design draught
Machinery and Equipment:	Main engine	MAN B&W engine type 5G45ME-B-B9 (Tier II)- Option Dual fuel (LNG)
	Bow thruster	abt.800 kW
	SCMR	Approx. 4,700 kW @ 94RPM
	Aux. Power	Three (3) Gensets, 450V, 60Hz, 3phase, P.F. 0.8, Class F rise B, IP44 class enclosed water cooled Alternators running max @1,000 RPM

Miscellaneous:	Classification	DNV or LRS; 1A1 Tanker for Chemicals ESP - Ship type 2, SPM, E0, NAUT-OC, VCS-1, CLEAN, BIS, TMON, INERT, COW, NAUTICUS (New building)
-----------------------	----------------	--

Scope of Work: Concept Design, including;
 General Arrangement
 Specification
 Tank arrangement plan
 Cargo system
 Initial machinery calculations for machinery
 Initial machinery calculations for cargo systems

Ref. No.: KEH 1388.04