



IMO 9620944

BAHRI ABHA

BAHRI ABHA

CONTRACT PRICE

MUSD 68.5

CLASSIFICATION

LR +100A1, Roll on - Roll off Cargo Ship, +LMC, IWS, UMS, NAV1, EP, LI, ACS(B)

DIMENSIONS

Length oa	224.96 m
Length pp	211.30 m
Beam mid	32.20 m
Draft	8.90 m
Depth to maindeck	13.30 m

TONNAGE

GT	50,715
tDw	22,332

DRIVERS

CABINS	
3 x 2-berth drivers	6

CREW

Crew 14 officer and 15 crew

VEHICLE DECKS

Deck	Free height	m ²
Dk 5 weatherdeck	3.4/open	3,725
Dk 4a hoistable	1.8/2.2	3,726
Dk 4	2.6/3.0/4.8	3,480
Dk 3a hoistable	1.8/2.5	3,415
Main deck Dk 3	4.3/5.0/6.8	4,760
Dk 2	5.8	2,720
Tanktop Dk 1	3.8	2,240
Total		24,165

Lo-lo capacity 702 TEU / 402 TEU on deck and 300 TEU in forward hold.

ACCESS

EXTERNAL ACCESS

Quarter ramp, l x w	39 x 8.5/15.5 m
	250t max load
Stern door, w x h	15.5 x 6.8 m, top hinged
Flush hatch on foredeck	
2 x cranes	120t at 15 m

INTERNAL ACCESS

Fixed ramp,	
Dk 3 -> Dk 2	Cover 52.8m long x 6.5m wide
Fixed ramp,	
Dk 2 -> deck 1,	
end hinged	Cover 33.6m long x 3.5m wide

MACHINERY

MAIN ENGINES

Make	1 Wärtsilä
Type	7RT flex58T-D
Effect, kW each	12,450
Effect, BHP ttl	16,932
Rpm	97

AUXILIARY ENGINES

Make	3 Himsen
Type	2 x 6H25/33, 1 x 9H25/33
Effect, kW each	2 x 1,560, 1 x 2,320
Rpm	720
Shaft generators, kW	2,200

PROPELLERS

Make	1 Wärtsilä
Diameter	6.70 m
Rpm	97
Bow thrusters	1 Hyundai
Effect, kW each	2,000
Sternthruster	1 Hyundai
Effect, kW each	1,500

SPEED/CONSUMPTION

Service speed	17.0 knots
Fuel consumption	41 t/day

TANK CAPACITIES

Heavy fuel oil	3,000t
Gas oil	200t
Ballast water	11,800t

SELECTION OF SUPPLIERS

PROJECT

Naval architect KNUD E. HANSEN A/S

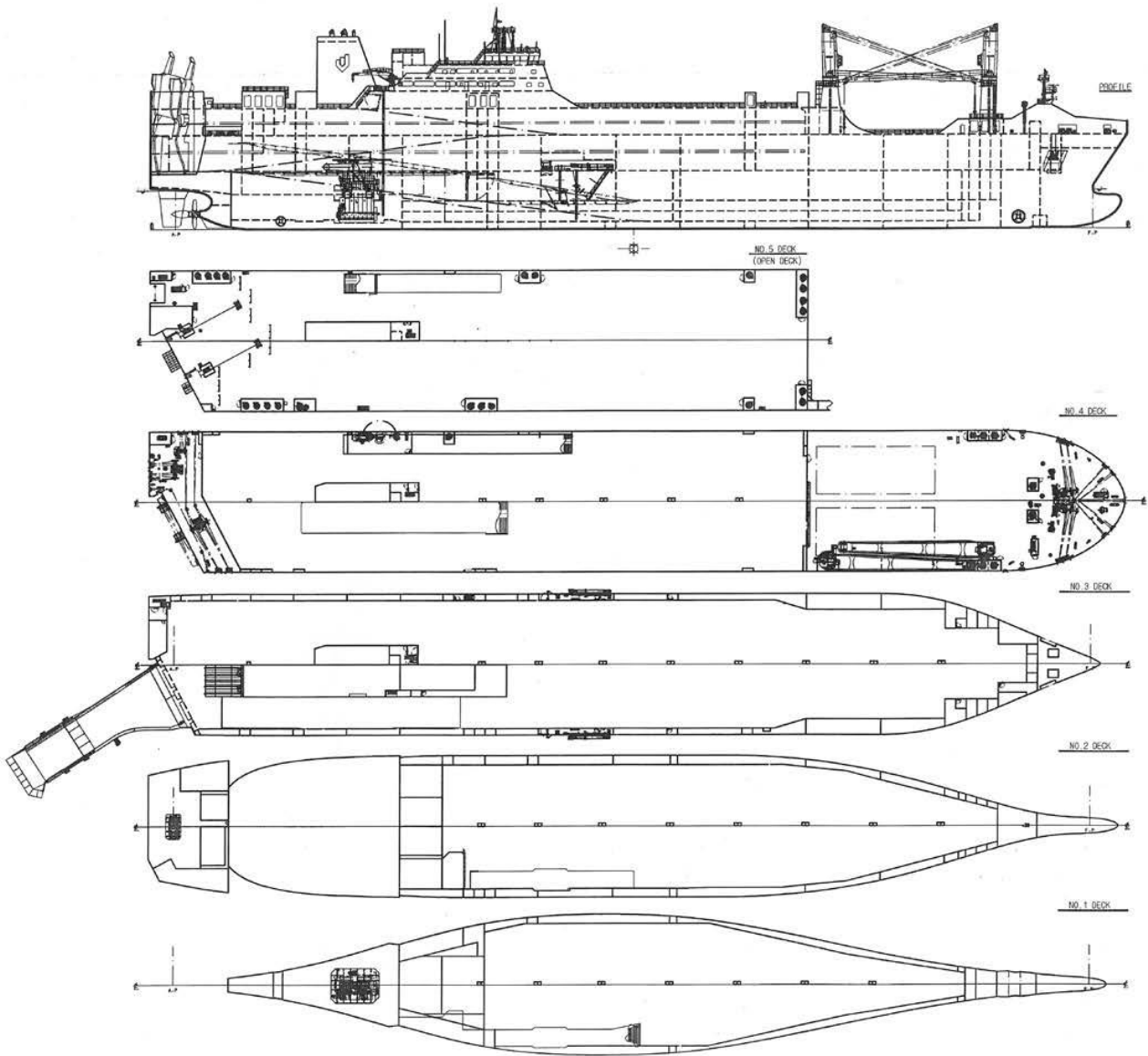
HARDWARE

Ballast treatment	Techcross Electro-Clean
Boilers	Alfa Laval
Cranes	MacGregor
Genset	Himsen
Lifeboat	Fassmer
Model test	SSPA
Propeller	Energopac, Wärtsilä
Ramps	MacGregor
Rudder	Wärtsilä, Energopac
Winches	Rolls-Royce

Built by Hyundai Mipo Dockyard, Ulsan, South Korea (Yard No 8085) for Bahri (earlier known as NSCSA, Riyadh, Saudi Arabia). Delivered 5 February 2013. In service Gulf-Saudi Arabia-Italy-USEC.



Sister vessels: **BAHRI HOFUF** - IMO: 9620956
BAHRI JAZAN - IMO: 9620970
BAHRI JEDDAH - IMO: 9626522
BAHRI TABUK - IMO: 9620968
BAHRI YANBU - IMO: 9626534



BAHRI ABHA

The BAHRI ABHA is the first of six new ro-ro vessels ordered by Bahri, formerly the National Shipping Company of Saudi Arabia (NSCSA). These replace four conros built by Swedish Kockums. The vessels are of an entirely novel concept conceived by Knud E. Hansen A/S, designed with a wide range of cargoes in mind, all the way from typical ro-ro vehicles, mafis, breakbulk and project cargo as well as a comparatively small number of lo-lo containers. The small forward hold, accessed by two starboard mounted heavy lift cranes, is designed for project cargoes. Despite its smaller overall dimensions, the BAHRI ABHA has a much larger ro-ro intake compared with its predecessors but is considerably more economical to operate at the 17 knot service speed.

