

PRESS RELEASE

DESIGN OF ARCTIC EXPEDITION CRUISE VESSEL TAKES AIM AT THE ECO-CONSCIOUS PASSENGER SEGMENT

29. AUGUST 2021



With the recent surge in eco-tourism and expedition travel, the cruise industry has ushered in a new type of consumer that represents a monumental shift from the stereotypical cruiser. The new demographic seeks to explore parts of the world that have remained relatively untouched, embracing the exquisite beauty of their natural surroundings without disturbing its habitat and with minimal carbon footprint. While doing so, they wish to gain a greater understanding and appreciation for the natural world around them.

In the fall of 2020, KNUD E. HANSEN showcased its latest design achievement: a 145 metre Arctic Expedition Cruise Vessel with a capacity of 300 passengers and a range of 8100 nautical miles. The design boasts a dual fuel propulsion plant with marine diesel oil and LNG, a battery bank and podded propulsion.

This arrangement provides superior maneuverability and efficiency with the ability to produce zero emissions while moored in some of the world's most environmentally sensitive and hard-to-reach destinations.

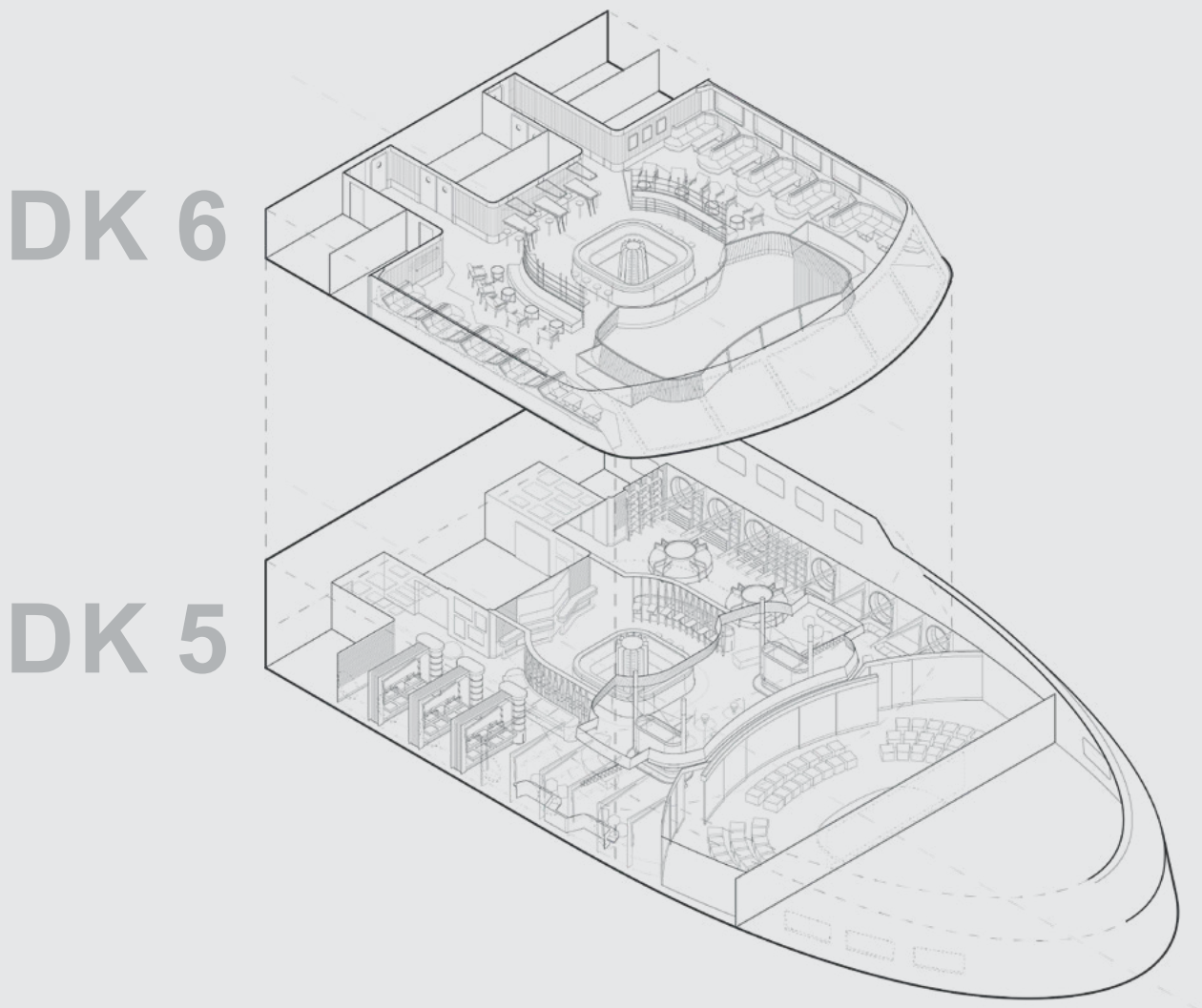
Today, KNUD E. HANSEN has expanded on this design by introducing a unique, interactive space on the vessel that seeks to bring nature inside the ship by offering passengers the opportunity to acquire a greater knowledge of their natural surroundings. The space comprises two decks at the forward end of the vessel with the lower deck featuring a collection of artifacts and exhibits, multiple displays and informative touchscreens, a library, as well as interactive equipment including microscopes and a virtual reality experience. ►

There is also a wraparound bar on centerline and lounge areas with comfortable seating throughout the space. Oversized porthole windows on both sides provide plenty of natural light while allowing passengers to enjoy magnificent views. Up forward is a convertible lecture hall with a stage and removeable partitions to allow for integration with the exhibit space.

Between the two decks is a large opening and stairwell on either side that creates a cavernous atrium, providing a bright, spacious feel typically found only on larger vessels. The upper deck includes a smaller bar, science exhibits, lounge seating as well as full height, wraparound windows on the side and forward end of the superstructure which allow for stunning, panoramic views.

The space is outfitted with an ultra-modern décor that includes sustainable, natural wood finishes, adjustable LED lighting, and dimmable smart windows for optimal energy conservation. It provides passengers with an exceptional learning environment on the open seas with an equally comfortable place to relax and take in the beauty of their surroundings.

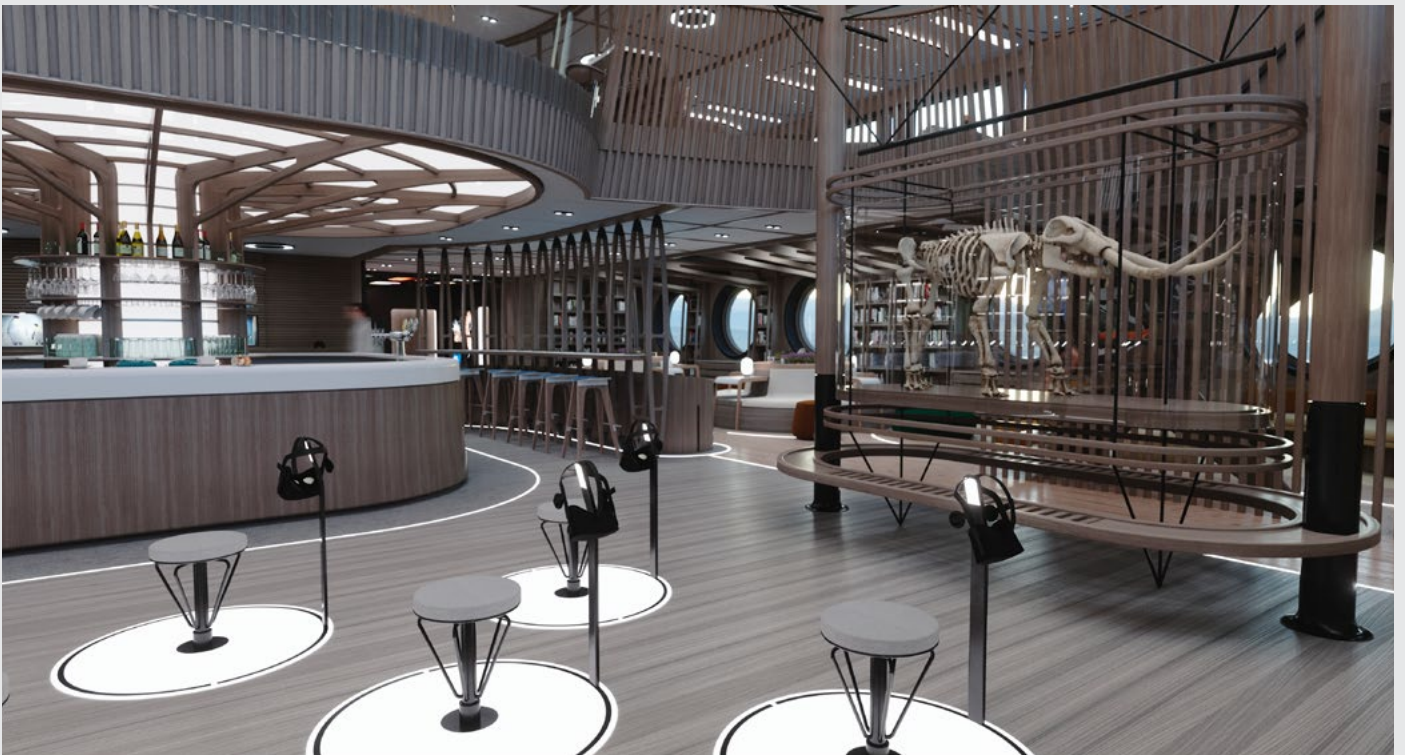
This design has been developed completely in-house, by the highly trained and experienced staff of naval architects, marine engineers and designers at KNUD E. HANSEN, who place the utmost importance on safety, efficiency and design ingenuity.





DK 5

EXIBITION AREA AND VIRTUAL REALITY





DK 5

LIBRARY AND INTERACTIVE SCREENS





ATRIUM ▲

DK 5

SCIENTIFIC LAB ▼





DK 5

CENTRAL BAR





LOUNGE ▲

DK 6

ATRIUM ▼





▲ BAR

▼ LOUNGE AREA







MAIN PARTICULARS

Length Overall	144.20 m
Breadth max moulded	22.00 m
Breadth at WL	21.80 m
Depth to mld. to deck 3	9.20 m
Design draught	6.90 m
Deadweight	1,965 t
Service Speed at design draught in open water	17.00 kn
Ice class PC3	

FOR MORE INFORMATION, PLEASE CONTACT

Finn Wollesen Petersen,
Managing Director
Mobile: +45 4084 2575
E-mail: fwp@knudehansen.com

ABOUT KNUD E. HANSEN

KNUD E. HANSEN is one of the world's leading independent marine consultancies with more than 80 years of experience in ship design, with a proven track record in providing unique and cutting-edge solutions to the maritime industry. KNUD E. HANSEN employs about 100 naval architects and mechanical engineers in Denmark, Australia, Canada, the Faroe Islands Greece, Spain, United Kingdom and USA.

Our approach is based on a combination of continuous innovation, the free exchange of ideas with our clients, and experience derived from many years spent working with every kind of vessel and maritime operator. Using these, we apply fresh thinking to each new project and tailor solutions that are both state-of-the-art and practical to meet the exact needs of each individual customer.

www.knudehansen.com