



# DESIGN STUDIO

INNOVATIVE DESIGNS FOR YOUR SHIP

# KNUD E. HANSEN

## Design Studio

Whether a ship is tied up alongside a dock or sailing from one port to another, it is the design that observers notice first. Aboard the ship, the interior layout and furnishings leave a lasting impression and play a vital role in the passengers' experience.

KNUD E. HANSEN's Design Studio is an in-house design hub dedicated to the interior design and the exterior style of KNUD E. HANSEN ships. We work closely with our in-house naval architects and marine engineers to produce designs that combine aesthetic appeal with safety, seaworthiness, and efficiency with a strong focus on environmental sustainability.

Our extensive experience allows us to understand how interiors need to be arranged to maximize flow and comfort. We work with you to ensure that your corporate values and branding are reflected in both interior and exterior design elements.

Clean lines, balanced spaces, attention to detail, choice of materials, and direct contact with the most important suppliers in the maritime industry, are the key strengths of the KNUD E. HANSEN Design Studio that aims to create elegant, innovative and timeless designs.



### THE IN-HOUSE DESIGN STUDIO TEAM



Following you all the way  
– from initial design to final concept



“The full circle”



In-house design engineers for an  
efficient and innovative process



# WHAT WE DO

## We do with passion and respect

– A good design is where form and function  
meet with minimal complexity

Our passion for ship design, interior design, contemporary art, and architecture is what unites us and this is reflected in our research and visionary projects. This spirit is cultivated by our constant curiosity for new technologies, materials, and languages, as well as developing creative ways of using spaces and creating new forms.

Our contribution is often requested from the beginning, helping clients to develop their ideas into a completely customized concept. With the support of our engineers, covering most of the technical aspects, we develop external lines and internal

layouts based on the identity and specifications of the brand, resulting in a general arrangement that we use to shape the concept design in a 3D space.

Because we place great emphasis on collaboration across our professional groups of architects, engineers, and draftsmen, costly mistakes are avoided, changes are done directly, and time and money is saved.

We take great pride involving our clients from initial design to final concept.

300 PAX Icebreaking Expedition Cruise Vessel: Pool and Icebar ▼





110 M Adventure Wind Cruise Vessel. Interior: Cabin ▲

300 PAX Icebreaking Expedition Cruise Vessel: Interior: Lounge area ▼







# EXTERIOR Design

We develop the exterior design of superstructures and deckhouses.  
All our designs are tailor-made and fully customizable to produce a bespoke  
solution that meets the client's needs and objectives.

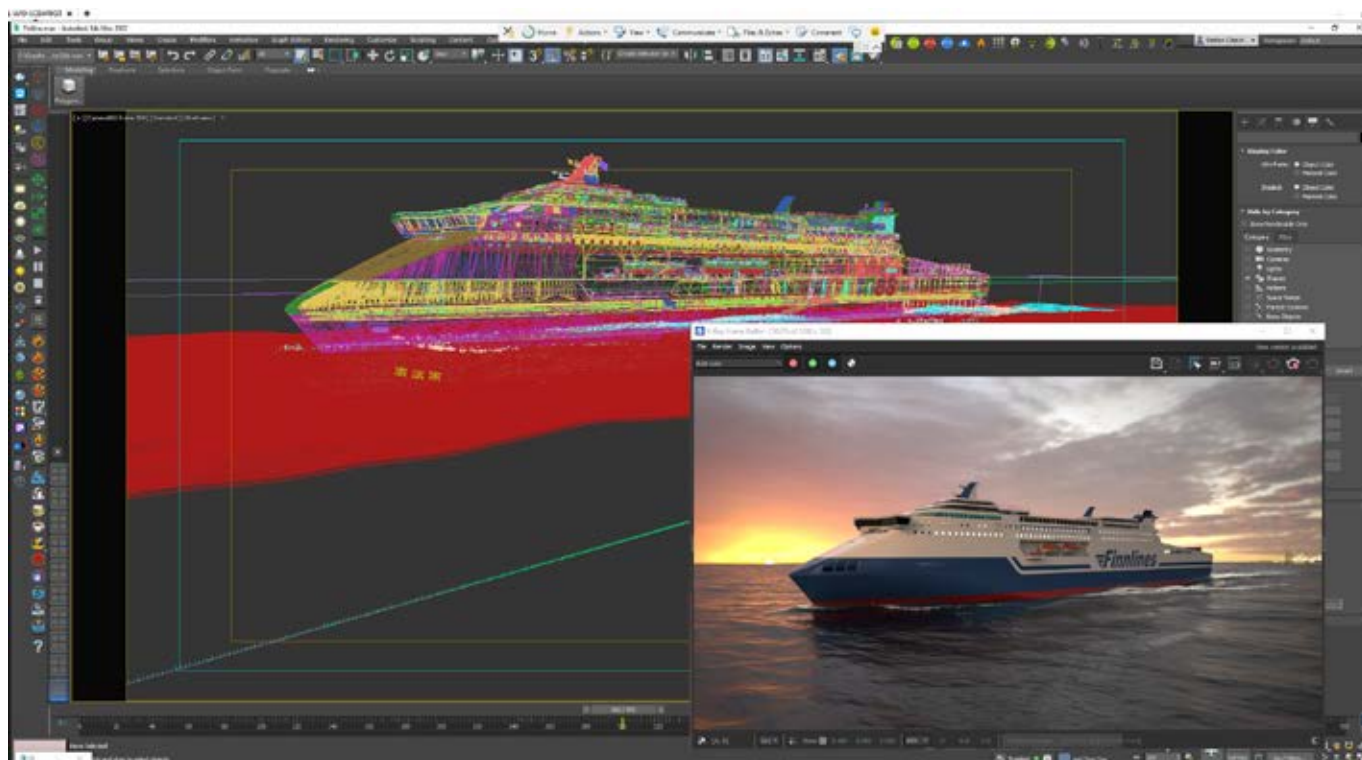
## SCOPE OF WORK TYPICALLY INCLUDES THE FOLLOWING

■  
Vessel  
Profiles

■  
2D Sketches &  
Artistic Impressions

■  
3D Models &  
Renderings

■  
3D Video  
Animations



Finnlines 3D work in progress ▲

### Long lasting designs

Our designers pay great attention to the exterior design of each type of ship. From passenger ships to work ships, every vessel is important to us. We study the lines and volumes to

create harmonious compositions that generate an aesthetically valid ship that lasts over time. We work to achieve harmonious designs that not only perform better but are vessels you would be proud to have in your fleet.

3D rendering: 5100 Im Superstar RoPAX for Finnlines ▼

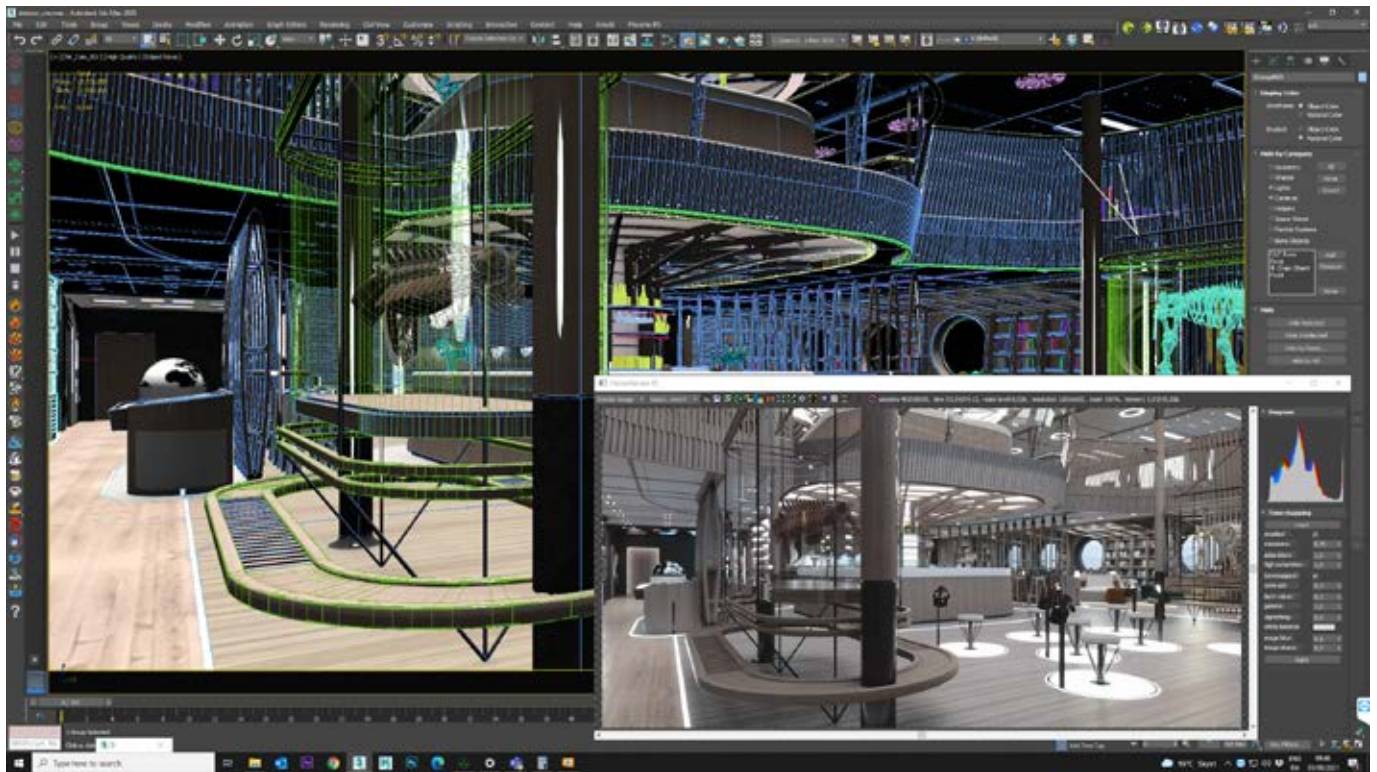


# INTERIOR Design

We develop customized interior design of all accommodation and public spaces on board. Our international team are often inspired by Nordic and Mediterranean design.

## SCOPE OF WORK TYPICALLY INCLUDES

- |  |   |  |  |                        |   |
|--|---|--|--|------------------------|---|
| ■  | ■                                       | ■                                      | ■  | ■                      | ■   |
| Development of<br>General<br>Arrangement<br>and Deck Plans | Furniture<br>Selection &<br>Arrangement | Materials<br>Selection &<br>Moodboards | 2D Sketches<br>& Artistic<br>Impressions | 3D Video<br>Animations | ShipSpace™<br>a virtual reality<br>tool for<br>Ship Design &<br>Ship Building |



3D work in progress on a 300 pax Icebreaking Expedition Cruise Vessel ▲

Expedition Cruise Vessel: Exhibition area on board ▼

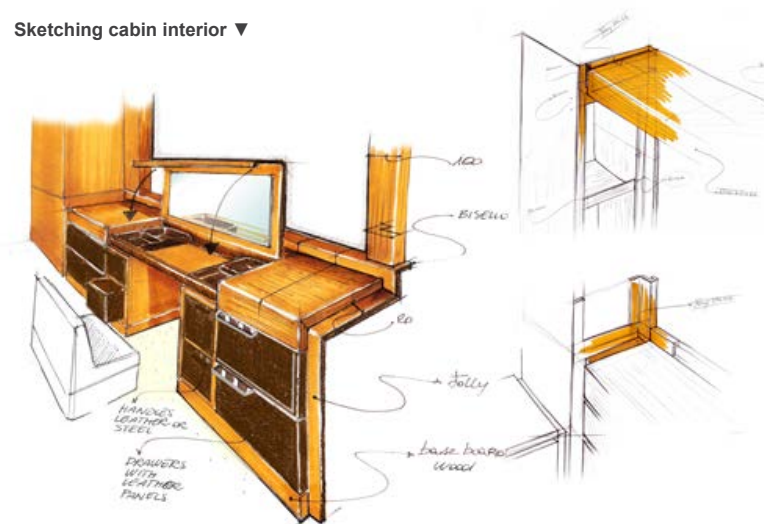


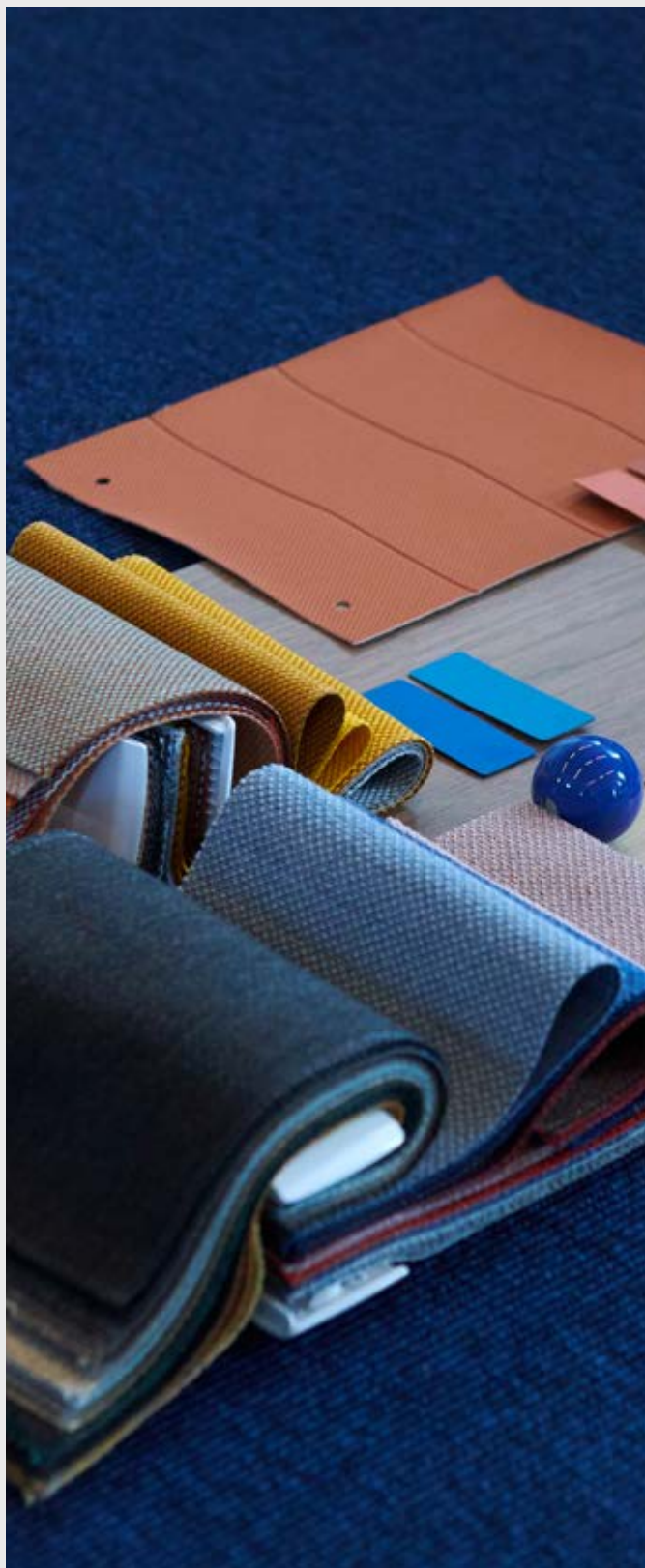


KNUD E. HANSEN Interior design. 110 M Adventure Wind Cruise Vessel. Suite ▲



Sketching cabin interior ▼





▲ Material selection mood board

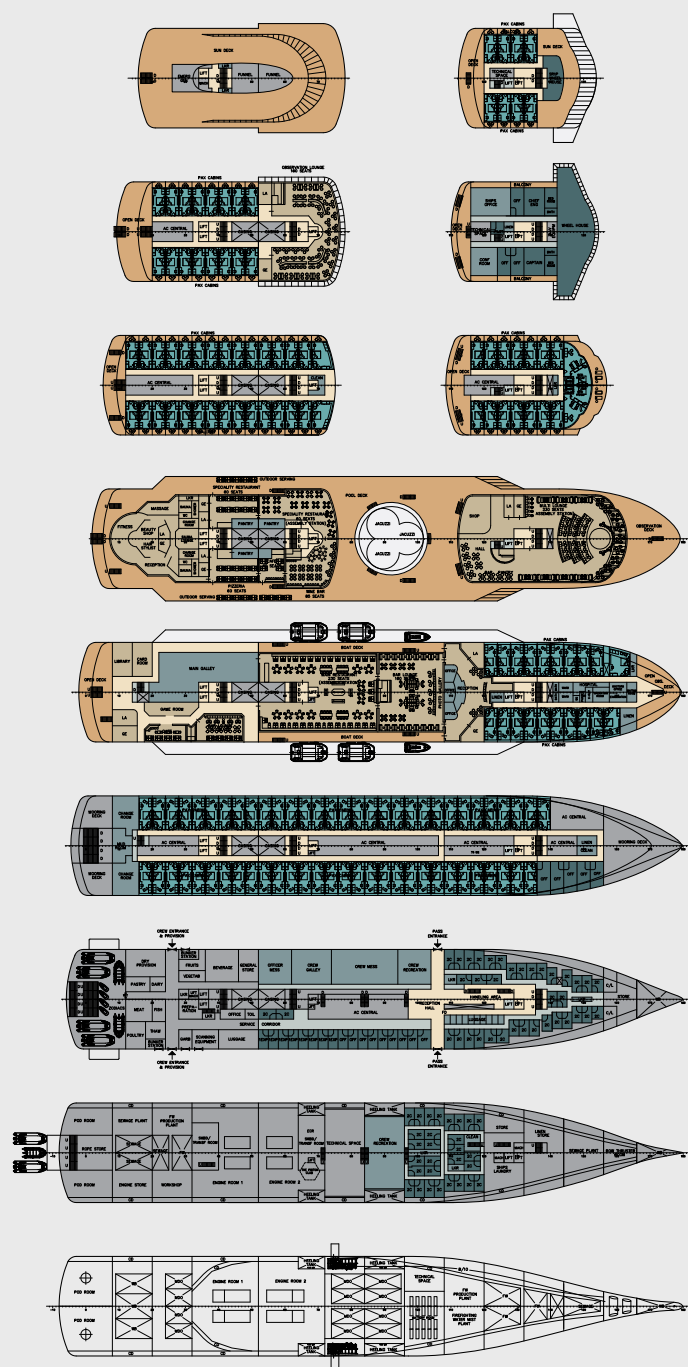
## Materials and specifications

Our close collaboration with the world's finest suppliers enable us to push the boundary of interior design focusing on latest technology to raise the quality of our ship designs and reduce their environmental impact.

## General arrangement

The first step on a project is the development of the general arrangement. Following the project together with our naval architects ensure that we have full control of the project and can match good exterior lines with functional interior layouts.

We consistently research new ways to experience spaces on board from public areas to private.





# SHIPSPACE™ A virtual reality tool for ship design & ship building

Have you ever wanted to be able to walk through your design, and see a concept first-hand? ShipSpace allows you to do exactly that! It allows you to export 3D CAD models into the virtual world, viewed from a first-person perspective, and incorporated this into your design process. ShipSpace is not a 360 degree guided video tour; its a tour on your own. Inspection on site like in real life.

ShipSpace removes the technical challenges related to technology and communication, and allows you to see designs in virtual reality.

ShipSpace is a proven tool for designers, engineers and customers to share ideas, discuss issues, and showcase products, thereby improving communication and collaboration from early concepts to final designs.

ShipSpace is a ground-breaking collaboration platform that uses Virtual Reality (VR) to help you design and build superior

vessels on time and on budget. ShipSpace brings your 3D model to life in a fully immersive simulated environment that allows full user-controlled navigation, which is easy to use, with amazing clarity and precision, regardless of size or complexity.

ShipSpace allows you a freedom like no other with tools like x-ray, measurement, and paintbrush options that allow you to see through walls, mark up changes and measure clearances. The platform includes a camera that can take photos of desired changes which you can send to your clients and customers like any real-world site inspection.

ShipSpace allows users based in different locations all over the world to meet virtually and discuss issues productively. This collaboration tool enables natural communication across the entire project, and as a result design mistakes and costly re-work can be avoided. It is a true innovation to strengthen the maritime industry.





#### **DENMARK**

##### **Main office**

Lundegaarden, Claessensvej 1  
3000 Elsinore  
Denmark

##### **Odense office**

Kystvejen 100  
5330 Munkebo  
Denmark

#### **AUSTRALIA**

Suite 104  
396 Scarborough Beach Road  
Osborne Park 6017  
Perth WA  
Australia

#### **FAROE ISLANDS**

Vestara bryggja 15, 3 hædd  
100 Tórshavn  
Faroe Islands

#### **GREECE**

67 Akti Miaouli str.  
18537 Piraeus  
Greece

#### **SPAIN**

Algeciras 1, Planta 1<sup>ra</sup>,  
Módulo 3-4  
11011 Cádiz  
Spain

#### **UNITED KINGDOM**

93 Great Suffolk Street  
London, SE1 0BX  
United Kingdom

#### **USA**

1650 S.E. 17<sup>th</sup> Street,  
Suite 212  
Fort Lauderdale, FL 33316  
USA

01 06 2022



**WE DESIGN SHIPS** We are a leading independent consultancy providing a comprehensive range of design, engineering and project management services to shipyards and ship owners around the world. Our innovative, customized solutions cover areas ranging from concept, tender/contract & basic design, to supporting the building and conversion process of all types of maritime vessels and offshore structures, to energy optimization and services for the offshore wind industry. Since 1937, over 850 vessels have been built and over 450 conversions carried out to our designs.

**WWW.KNUDEHANSEN.COM**